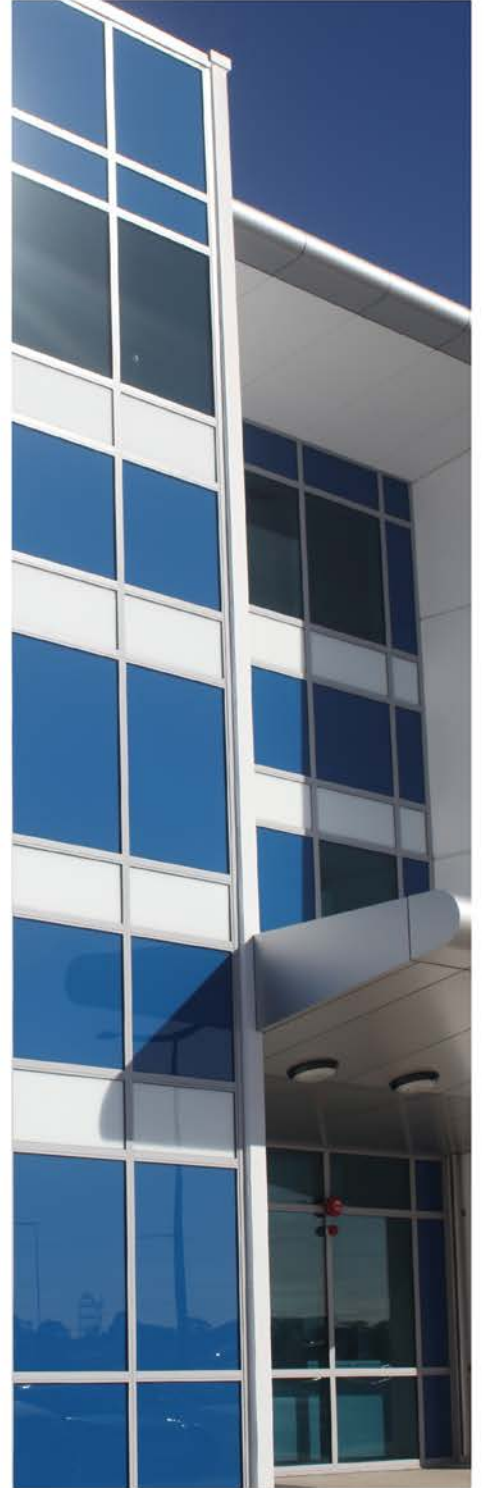


PERFORMANCE DATA

IGU



WALSHSGLASS

THE GLASS SPECIALIST

TWIN SEAL IGUs

PRODUCT NAME	NOMINAL THICKNESS	VISIBLE		SOLAR		UV TRANS	U VALUE		SHGC	SHADING CO.	WEIGHT M ²
		Trans	Refl.	Trans	Refl.		Air	Argon			
Float											
Clear	3+12+3	81	15	69	13	53	2.7	2.6	0.75	0.87	15
	4+12+4	80	15	69	13	51	2.7	2.6	0.75	0.86	20
	5+12+5	79	15	63	12	47	2.7	2.5	0.72	0.83	25
	6+12+6	78	15	62	12	44	2.7	2.5	0.71	0.82	30
	8+12+6	77	14	57	11	42	2.7	2.5	0.66	0.76	35
	10+12+6	76	14	54	10	39	2.7	2.5	0.64	0.73	40
	12+12+6	75	14	51	10	37	2.6	2.5	0.61	0.71	45
Grey	4+12+4	50	8	46	8	24	2.7	2.6	0.55	0.64	20
	5+12+5	42	7	38	7	19	2.7	2.5	0.49	0.57	25
	6+12+6	37	7	33	7	15	2.7	2.5	0.45	0.52	30
	10+12+6	24	5	24	5	9	2.7	2.5	0.38	0.44	40
	12+12+6	19	5	20	5	7	2.6	2.5	0.34	0.40	45
Green	6+12+6	68	12	39	8	21	2.7	2.5	0.50	0.57	30
	10+12+6	56	9	24	6	9	2.6	2.5	0.37	0.43	40
Bronze	6+12+6	43	8	38	7	15	2.7	2.5	0.50	0.57	30
	10+12+6	30	6	28	6	7	2.6	2.5	0.41	0.48	40
Laminate											
Clear	6.38+12+6	78	15	58	12	<1	2.7	2.5	0.67	0.77	30.4
Grey	6.38+12+6	37	7	37	7	<1	2.7	2.5	0.49	0.56	30.4
Bronze	6.38+12+6	46	8	40	8	<1	2.7	2.5	0.52	0.60	30.4
Green	6.38+12+6	63	11	50	9	<1	2.7	2.5	0.60	0.70	30.4
Translucent	6.38+12+6	58	10	44	8	<1	2.7	2.5	0.55	0.64	30.4
High Performance Tones											
VFloat SuperGrey	6+12+6	8	4	6	4	1	2.7	2.5	0.21	0.25	30
Viridian EVantage™											
Grey (#2)	6+12+6	29	10	24	9	8	2.0	1.7	0.33	0.39	30
Bronze (#2)	6+12+6	34	13	28	11	9	2.0	1.7	0.38	0.44	30
BlueGreen (#2)	6+12+6	51	21	29	12	13	2.0	1.7	0.38	0.44	30
Clear (#2)	6+12+6	61	27	47	20	23	2.0	1.7	0.56	0.64	30
SuperGreen (#2)	6+12+6	44	18	21	9	7	2.0	1.7	0.30	0.34	30
SuperBlue (#2)	6+12+6	35	13	19	9	8	1.9	1.7	0.29	0.33	30
Viridian EnergyTech™											
EnergyTech Clear (#2)	4+12+4	75	17	57	15	41	1.9	1.6	0.64	0.74	20
	6+12+6	73	16	52	14	36	1.9	1.6	0.61	0.71	30
	10+12+6	71	16	48	12	32	1.9	1.6	0.58	0.66	40
EnergyTech Green (#2)	6+12+6	63	13	33	9	19	1.9	1.6	0.41	0.48	30
EnergyTech SuperGreen (#2)	6+12+6	54	11	24	7	10	1.9	1.6	0.32	0.37	30
EnergyTech Grey (#2)	4+12+4	45	9	38	9	18	1.9	1.6	0.46	0.53	20
	6+12+6	35	8	29	8	13	1.9	1.6	0.39	0.45	30
Viridian SolTech™											
SolTech Neutral (#2)	4+12+4	55	12	38	10	34	1.9	1.6	0.46	0.53	20
	6+12+6	56	12	36	10	30	1.9	1.6	0.45	0.52	30
SolTech Grey (#2)	6+12+6	27	6	19	6	10	1.9	1.6	0.28	0.33	30
Sunergy Float											
Clear (#2)	4+12+6	61	12	44	12	39	2.1	1.9	0.61	0.53	20
	6+12+6	60	12	41	11	34	2.1	1.9	0.59	0.51	30
	10+12+6	55	12	40	11	33	2.1	1.9	0.56	0.49	40

TWIN SEAL IGUs with LOW E

PRODUCT NAME	NOMINAL THICKNESS	VISIBLE		SOLAR		UV TRANS	U VALUE		SHGC	SHADING CO.	WEIGHT M ²
		Trans	Refl.	Trans	Refl.		Air	Argon			
Float											
Clear	3+12+3	75	18	58	16	42	1.9	1.6	0.70	0.81	17.5
	4+12+4	74	18	57	16	41	1.9	1.6	0.70	0.81	20
	5+12+5	74	17	55	15	40	1.9	1.6	0.68	0.78	22.5
	6+12+6	73	17	52	15	35	1.9	1.6	0.67	0.77	30
	8+12+8	71	17	48	13	34	1.9	1.6	0.62	0.71	35
	10+12+6	70	17	46	13	32	1.9	1.6	0.59	0.68	40
	12+12+6	69	16	44	12	30	1.9	1.6	0.57	0.65	45
Grey	4+12+4	46	9	38	10	20	1.9	1.6	0.50	0.57	20
	5+12+4	39	8	32	9	16	1.9	1.6	0.44	0.51	22.5
	6+12+6	34	7	27	8	12	1.9	1.6	0.40	0.46	30
	10+12+6	22	5	20	6	7	1.9	1.6	0.32	0.37	40
	12+12+6	17	5	16	6	6	1.9	1.6	0.28	0.33	45
Green	6+12+6	63	14	33	9	17	1.9	1.6	0.45	0.51	30
	10+12+6	52	11	21	7	7	1.9	1.6	0.32	0.36	40
Bronze	6+12+6	40	8	31	9	12	1.9	1.6	0.44	0.51	30
	10+12+6	28	6	19	7	6	1.9	1.6	0.36	0.42	40
Laminate											
Clear	6.38+12+6	72	17	50	13	<1	1.9	1.6	0.63	0.73	30.4
Grey	6.38+12+6	34	7	30	8	<1	1.9	1.6	0.44	0.51	30.4
Bronze	6.38+12+6	43	9	34	9	<1	1.9	1.6	0.47	0.55	30.4
Green	6.38+12+6	59	13	42	11	<1	1.9	1.6	0.56	0.65	30.4
Translucent	6.38+12+6	55	12	38	10	<1	1.9	1.6	0.51	0.59	30.4
Translucent Grey	6.76+12+6	26	6	23	7	<1	1.9	1.6	0.37	0.42	30.8
High Performance Tones											
VFloat SuperGrey	6+12+6	7	4	5	4	1	1.9	1.6	0.15	0.18	30
Viridian EVantage™ Reflective											
Grey (#2)	6+12+6	27	11	20	9	7	1.8	1.5	0.31	0.36	30
Bronze (#2)	6+12+6	32	13	24	11	7	1.8	1.5	0.35	0.41	30
BlueGreen (#2)	6+12+6	47	22	26	13	10	1.8	1.5	0.36	0.41	30
Clear (#2)	6+12+6	57	29	41	21	19	1.8	1.5	0.53	0.61	30
SuperGreen (#2)	6+12+6	41	19	18	10	5	1.8	1.5	0.27	0.32	30
SuperBlue (#2)	6+12+6	33	14	17	9	7	1.8	1.5	0.27	0.31	30
Viridian EnergyTech™											
EnergyTech Clear (#2)	4+12+4	69	19	51	16	34	1.8	1.5	0.61	0.71	20
	6+12+6	67	19	47	15	29	1.8	1.5	0.59	0.68	30
	10+12+6	65	18	43	13	26	1.7	1.5	0.55	0.63	40
EnergyTech Green (#2)	6+12+6	59	15	29	9	15	1.8	1.5	0.39	0.45	30
EnergyTech SuperGreen (#2)	6+12+6	50	13	22	8	8	1.8	1.5	0.31	0.35	30
Viridian SolTech™											
SolTech Neutral (#2)	4+12+4	51	13	34	11	28	1.8	1.5	0.44	0.51	20
	6+12+6	52	13	32	11	24	1.7	1.5	0.43	0.50	30
SolTech Grey (#2)	6+12+6	25	6	17	7	8	1.8	1.5	0.27	0.31	15
Viridian ComfortPlus™											
Clear 82 (#2)	8.38+12+6	67	18	43	13	<1	1.7	1.5	0.55	0.64	35.4
	10.38+12+6	66	18	42	13	<1	1.7	1.5	0.54	0.60	40.4
	12.38+12+6	65	18	40	12	<1	1.7	1.5	0.52	0.59	45.4
Neutral 59 (#2)	8.38+12+6	49	13	30	9	<1	1.7	1.5	0.40	0.46	35.4
Viridian ComfortHush™											
Clear (#2)	6.5+12+6	68	18	45	14	<1	1.7	1.5	0.58	0.66	30.5
Neutral (#2)	6.5+12+6	49	13	30	9	<1	1.7	1.5	0.40	0.46	30.5

Information derived from Viridian Glass. www.viridianglass.com.au

E-tech has been used as the inner panel.

The data is measured using glass only and all care should be taken when evaluating our published data that the same environmental conditions have been used.

For the most up-to-date information, please visit our website.

All performance data is calculated using LBL Windows 5.2 software. NFRC 100-2001 conditions have been used.

Product Name - Where # appears, ie (#2), this identifies the position of the coated surface of the glass. Glass surfaces are counted from the exterior to the interior of the building.

The first number is the outer glass thickness, +12 is the width of the gap, then the thickness of the inner panel of the unit.